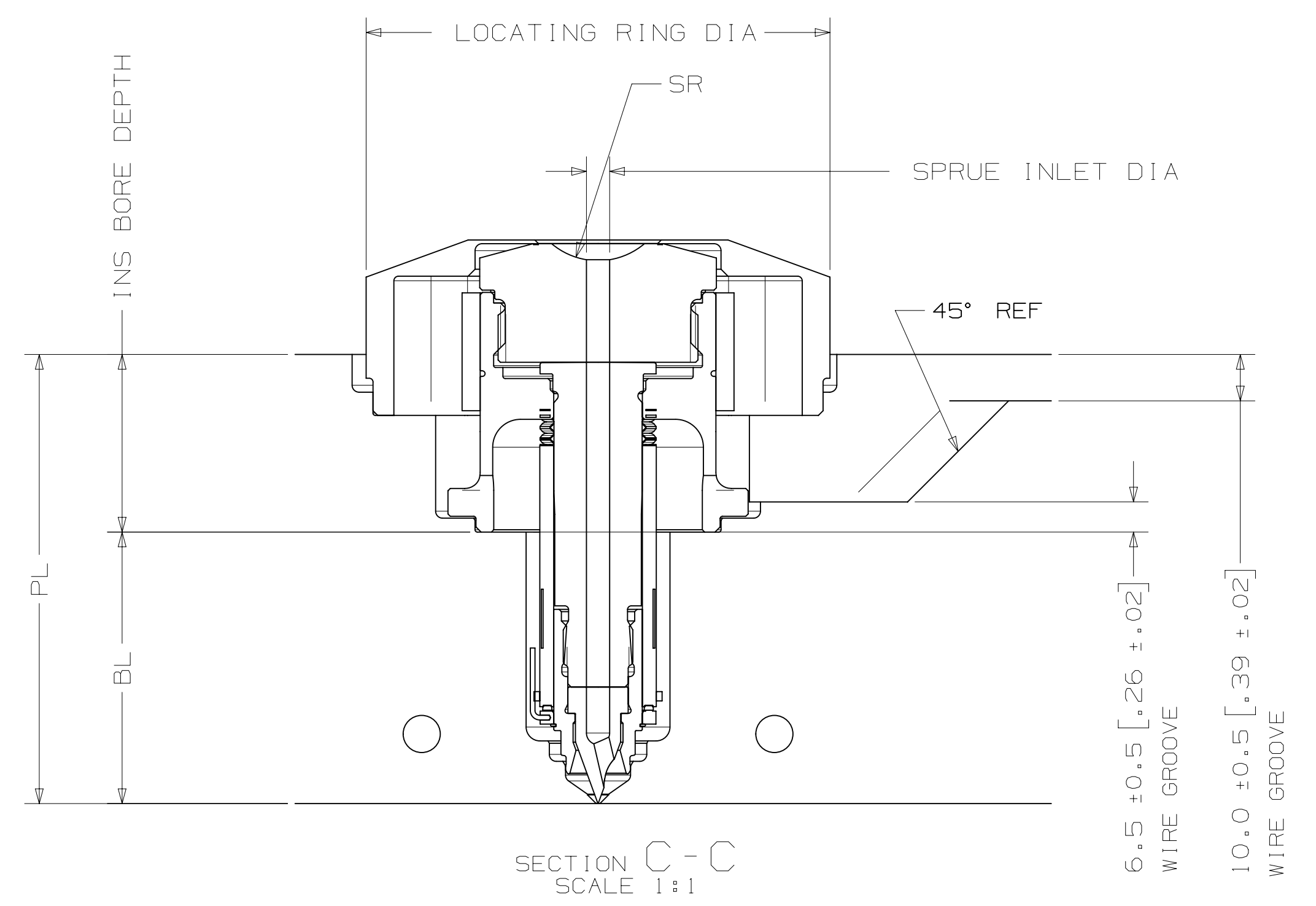
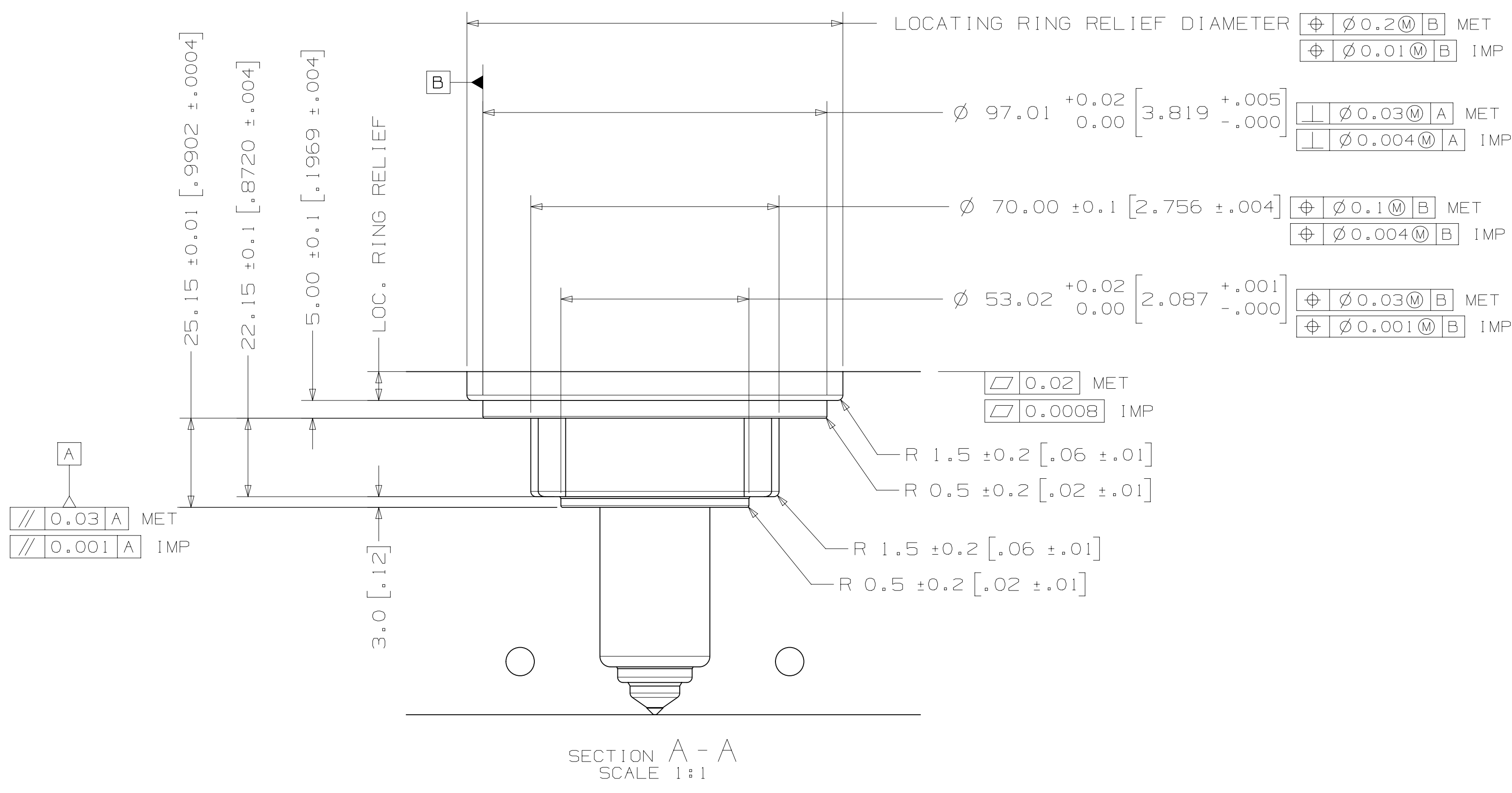
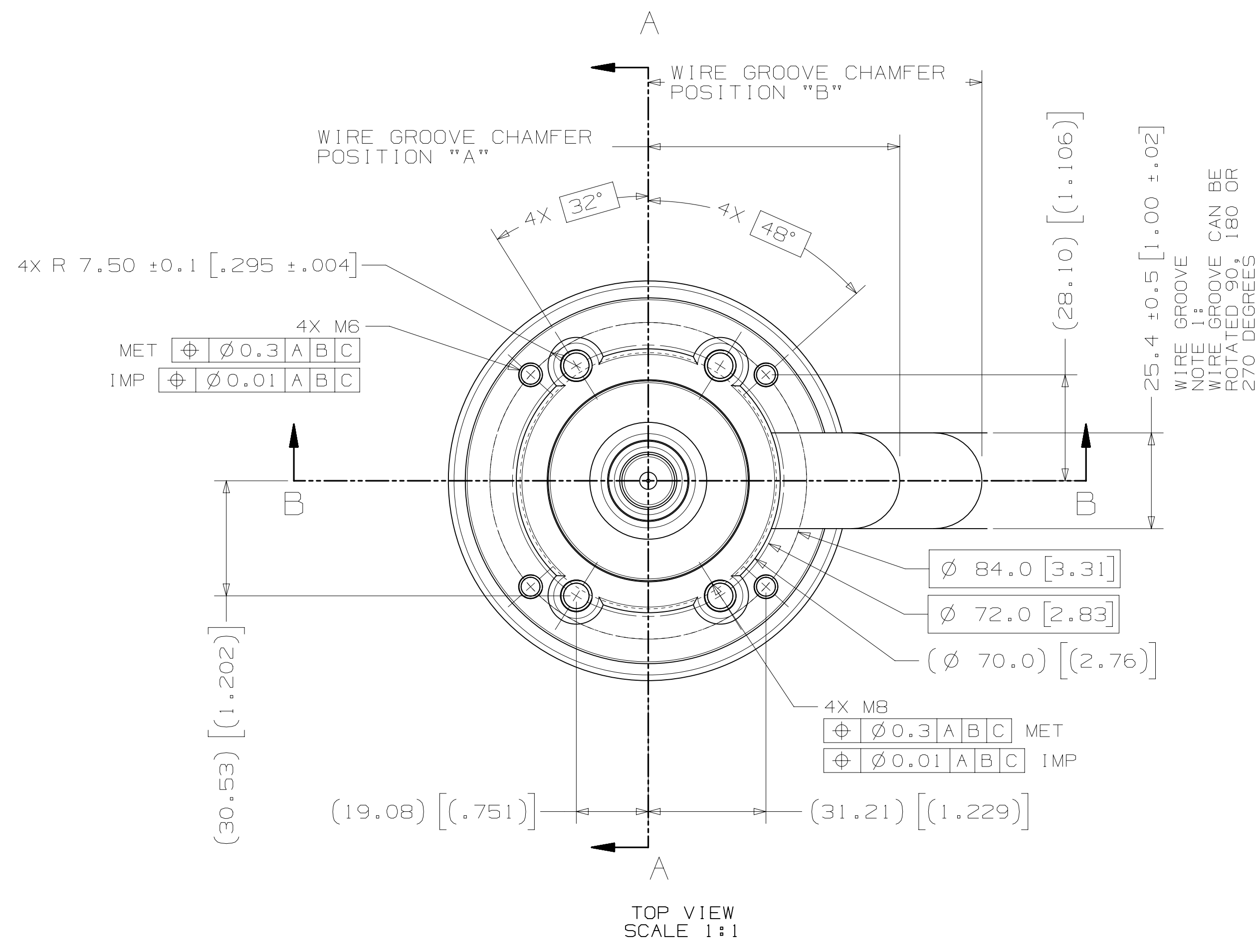




# INSTALLATION DRAWING

REV 0  
8051599



	LOCATING RING OUTER DIAMETER	LOCATING RING RELIEF DIAMETER (±0.5mm)	WIRE GROOVE CHAMFER POSITION "A" (±2.0)	WIRE GROOVE CHAMFER POSITION "B" (±2.0)	SPRUE BUSHING	
					SEAL-OFF TYPE	CHANNEL Ø IN - OUT
U750	100mm	106.0	66.7	88.5	FLAT	11.5-THRU
	101.3mm (3.99")	106.0	66.7	88.5	SR 12.7	
	125mm	130.0	78.7	100.5	SR 19.05	

NOZZLE	TIP	NOZZLE HOUSING LENGTH	BL AT DELTA TEMP													
			60° - 79°	80° - 99°	100° - 119°	120° - 139°	140° - 159°	160° - 179°	180° - 199°	200° - 219°	220° - 239°	240° - 259°	260° - 279°	280° - 300°		
U750	HT-U	50	38.46		38.48			38.51				38.54			38.56	
		60	48.47		48.50			48.53				48.56			48.60	
		70	58.48		58.51			58.55				58.59			58.63	
		80	68.49		68.52			68.57				68.62			68.67	
		90	78.50		78.54			78.59				78.65			78.70	
		100	88.51		88.55			88.61				88.67			88.74	
		110	98.51		98.56			98.63				98.70			98.77	
		120	108.52		108.57			108.65				108.73			108.80	
		130	118.53		118.59			118.67				118.76			118.84	
		140	128.54		128.60			128.69				128.78			128.87	
		150	138.55		138.61			138.71				138.81			138.91	
		160														
		170														
		180														
		190														
		200														
210																
220																
230																
240																
250																
260																
270																
280																
290																
300																

DELTA TEMP = TEMP OF MELT - TEMP OF MOLD

REV	DATE	DESCRIPTION	DRWN	CHKD

FOR TORQUE SPECIFICATIONS, REFER TO HS 252	METRIC	TITLE Hot Sprue Assembly U750 HT U
WEIGHT - kg	NO. INTELLECTUAL PROPERTY RIGHTS APPLIED OR GRANTED ALL RIGHTS RESERVED. COPYRIGHT 2011 HUSKY	SCALE 1:1 SIZE AOR DRAWING 8051599 REV 0

