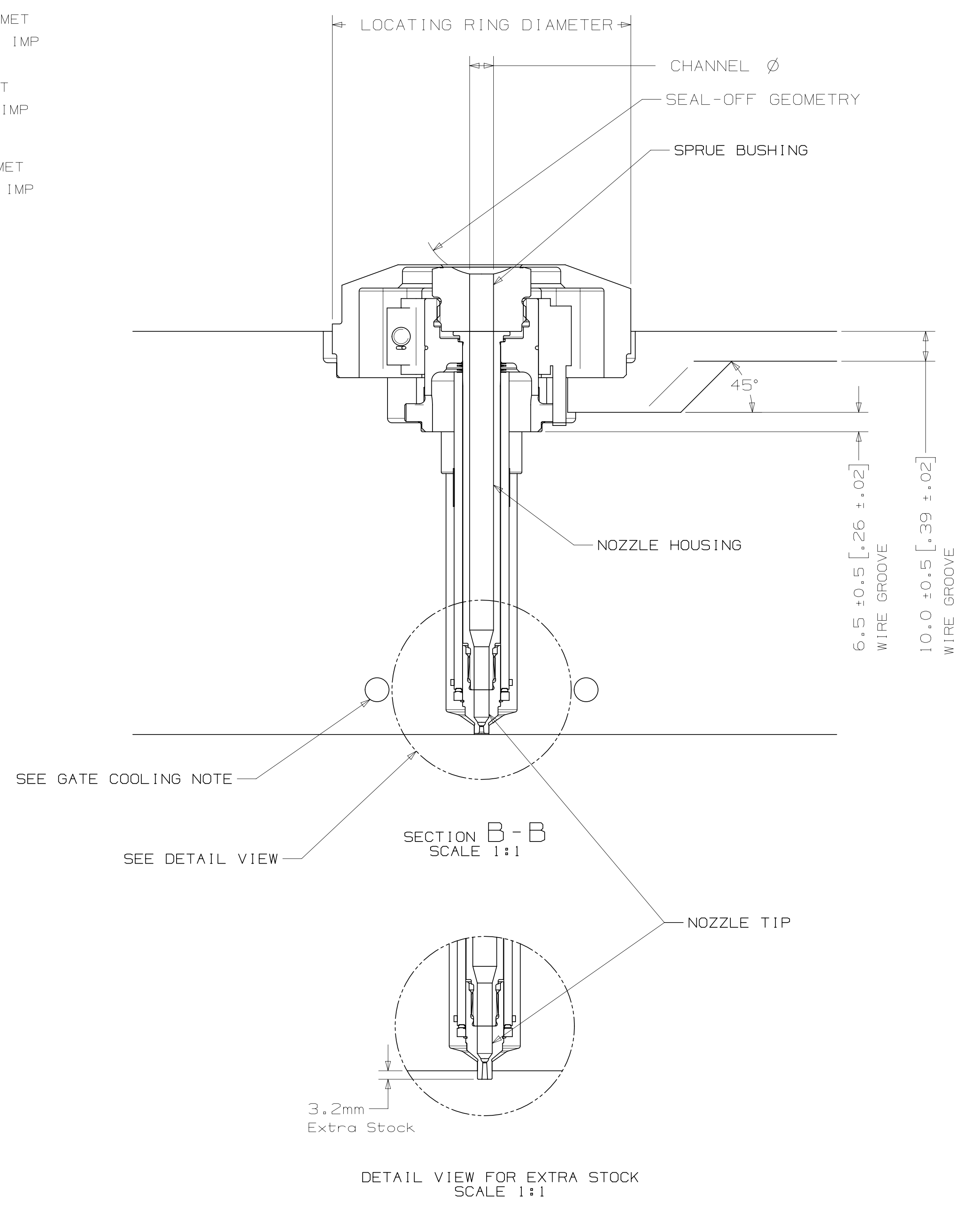
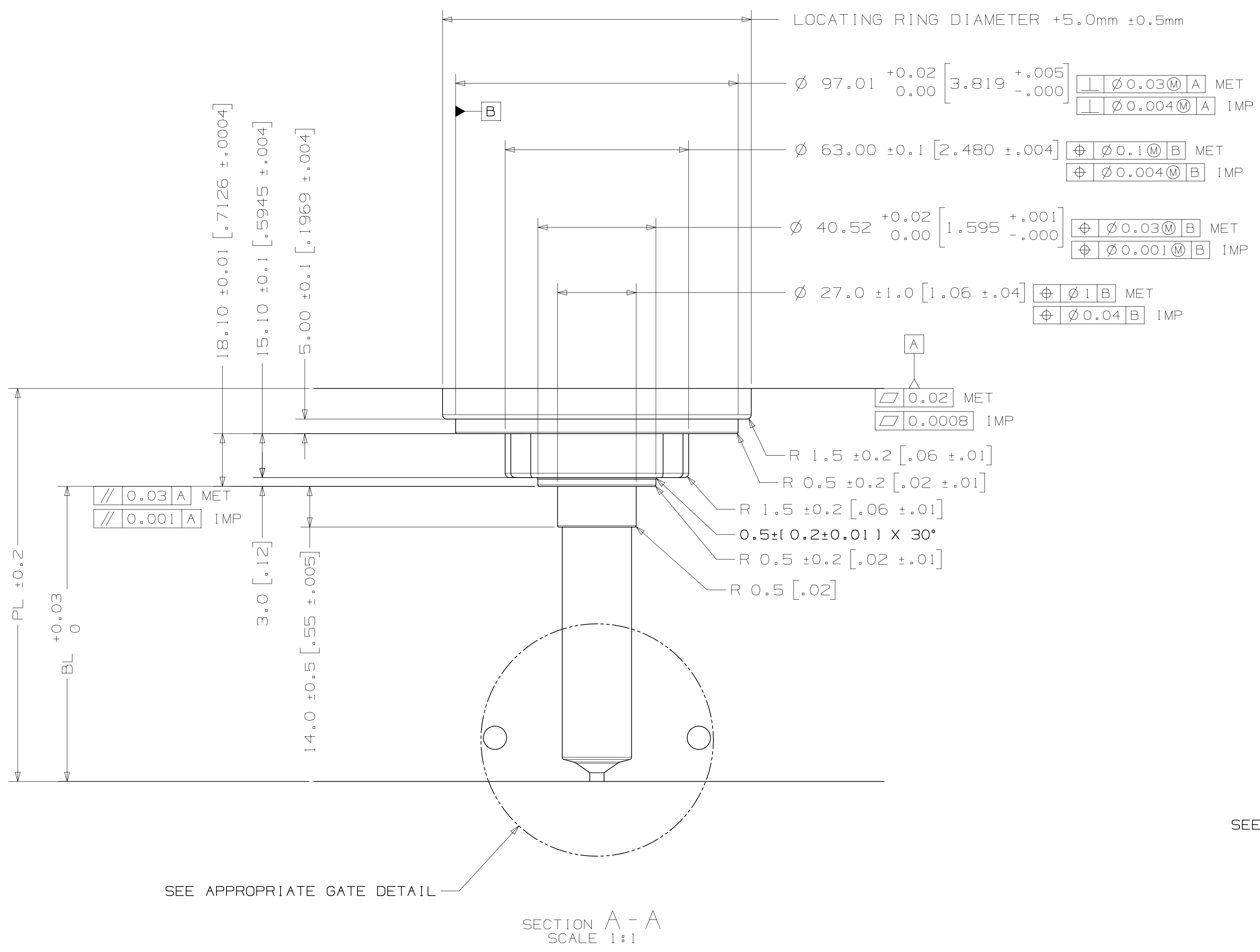
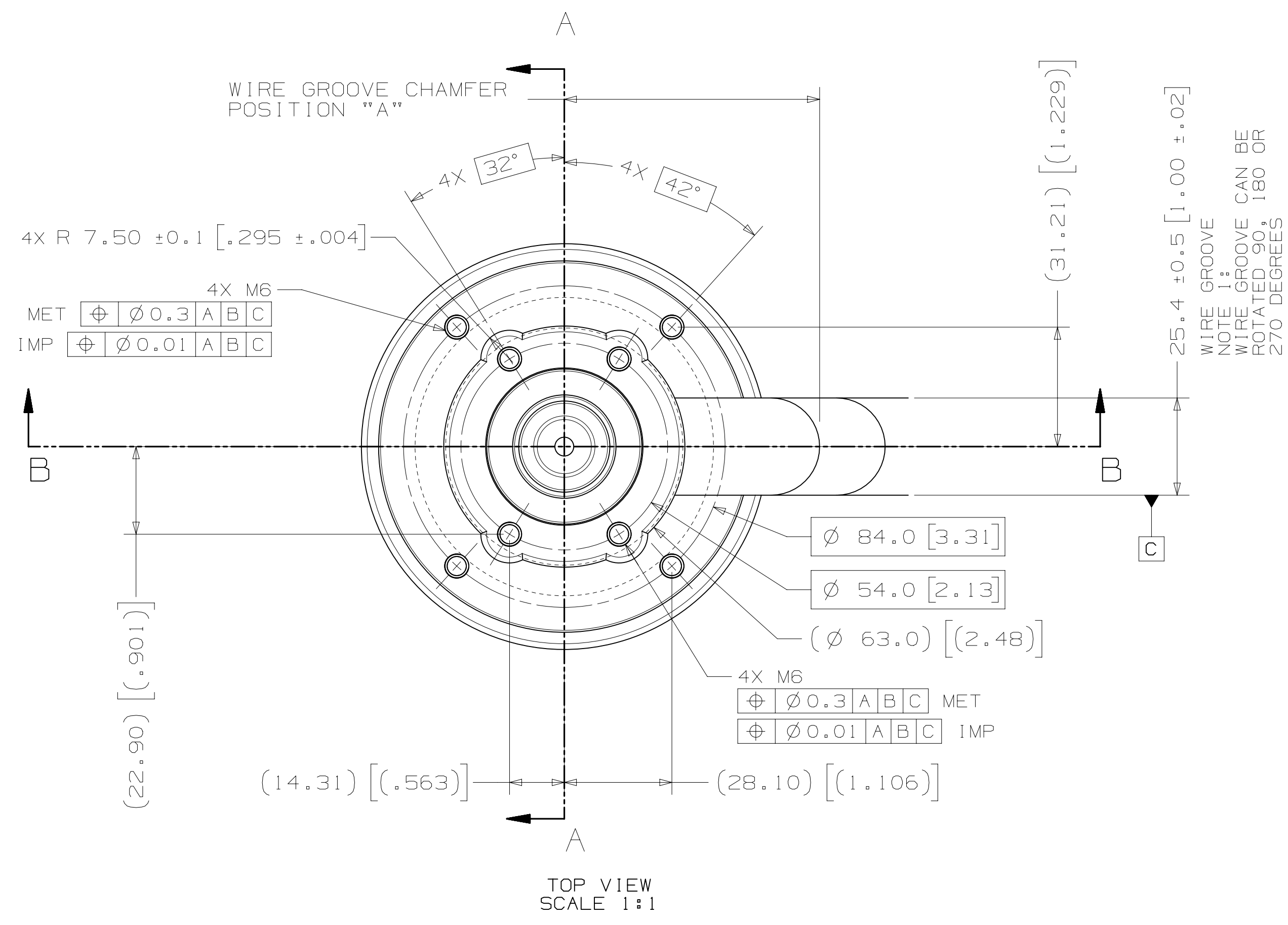


INSTALLATION DRAWING

REV: 0
8093478



NOZZLE SERIES	NOZZLE TIP	PL RANGE	Approx. BL*
U500	HT-TS	54.28(12.137) - 221.44(18.718)	32(1.26) - 181(7.13)

*Approx. BL VALUES IN THE TABLE ARE REFERENCES WHICH CAN DEVIATE BY +/-1mm. FINAL BL VALUE CAN BE FOUND ON GATE DETAIL DRAWING AND 3D AFTER FINISHED DESIGN. BL AVAILABLE IN THE INCREMENT OF 10mm WITHIN RANGE.

U500	SPRUE BUSHING	
	SEAL-OFF GEOMETRY SPHERICAL RADIUS	CHANNEL Ø IN - OUT
	FLAT	4 - 8
	FLAT	
	SEAL-OFF 12.7 (1/2")	
	SEAL-OFF 15.5	6.35 - 8
	SEAL-OFF 19.05 (3/4")	8 - THRU
	SEAL-OFF 20	
	SEAL-OFF 40	

U500	LOCATING RING DIAMETER	WIRE GROOVE CHAMFER POSITION "A" (±2.0)
	100mm	66.7
	101.3mm (3.99")	66.7
	125mm	78.7

RECOMMENDED GATE COOLING GUIDELINES
ADEQUATE COOLING IS ESSENTIAL FOR THE PROPER FUNCTION OF THIS SYSTEM. REFER TO THE HOT RUNNER PRODUCT GUIDE FOR MORE DETAILED GUIDELINES.

RECOMMENDED GATE MATERIAL
NOTE: THESE MATERIALS MAY NOT OFFER THE DESIRED RESISTANCE TO ABRASIVE AND/OR CORROSIVE RESINS, FILLERS AND/OR ADDITIVES
A1S1 H13 (48-51 Rc)
A1S1 420 (48-51 Rc)

RECOMMENDED GATE MANUFACTURING GUIDELINES
- HARDENED GATE INSERTS (48-51) ARE RECOMMENDED WHEN USING SOFTER CAVITY STEELS. SOFTER CAVITIES MAY BE ACCEPTABLE FOR CERTAIN APPLICATIONS. CONTACT YOUR HUSKY REPRESENTATIVE WITH QUESTIONS.
- EDM'ING THE GATE AREA CAUSES MICRO CRACKS WHICH LEAD TO BRITTLE GATE FAILURES. ALSO - DO NOT EDM THE MOLDING SURFACE WITHIN 2mm OF THE GATE HOLE.
- MACHINE THE GATE HOLE AFTER HARDENING TO AVOID EXCESSIVE QUENCH IN THE THIN SECTION DURING HEAT TREAT & RESULTING OVERHARDENING IN THE GATE AREA.
- RECESSED GATES ON THE PRODUCT REDUCE THE GATE AREA STRENGTH LEADING TO GATE FAILURES.
- WELDING THE GATE AREA INCREASES STRESSES AT THE GATE, SOFTENS THE AREA AROUND THE WELD AND CAN CAUSE GATE FAILURES.

REV	DATE	DESCRIPTION	DRWNG	CHKD
5	2020-05-26	TABLE UPDATED PER LATEST CALCULATION	DRWNG DEEBAN N T	CHKD:
4	2019-07-09	TEMPLATE VALUES UPDATED AS PER SOL 2.0	DRWNG MURALI DHARAN	CHKD:
3	2019-02-05	SINGLE CAVITY NAMEPLATE REMOVED	DRWNG ARUN	CHKD:
2	2018-05-20	DRAWING NAME CHANGED	DRWNG ANUSHAL	CHKD:
0	2017-09-08	ORIGINAL ISSUE - DESIGNED BY: DHANANLEYAN	DRWNG DHANANLEYAN	CHKD: PICHLER KLAUS

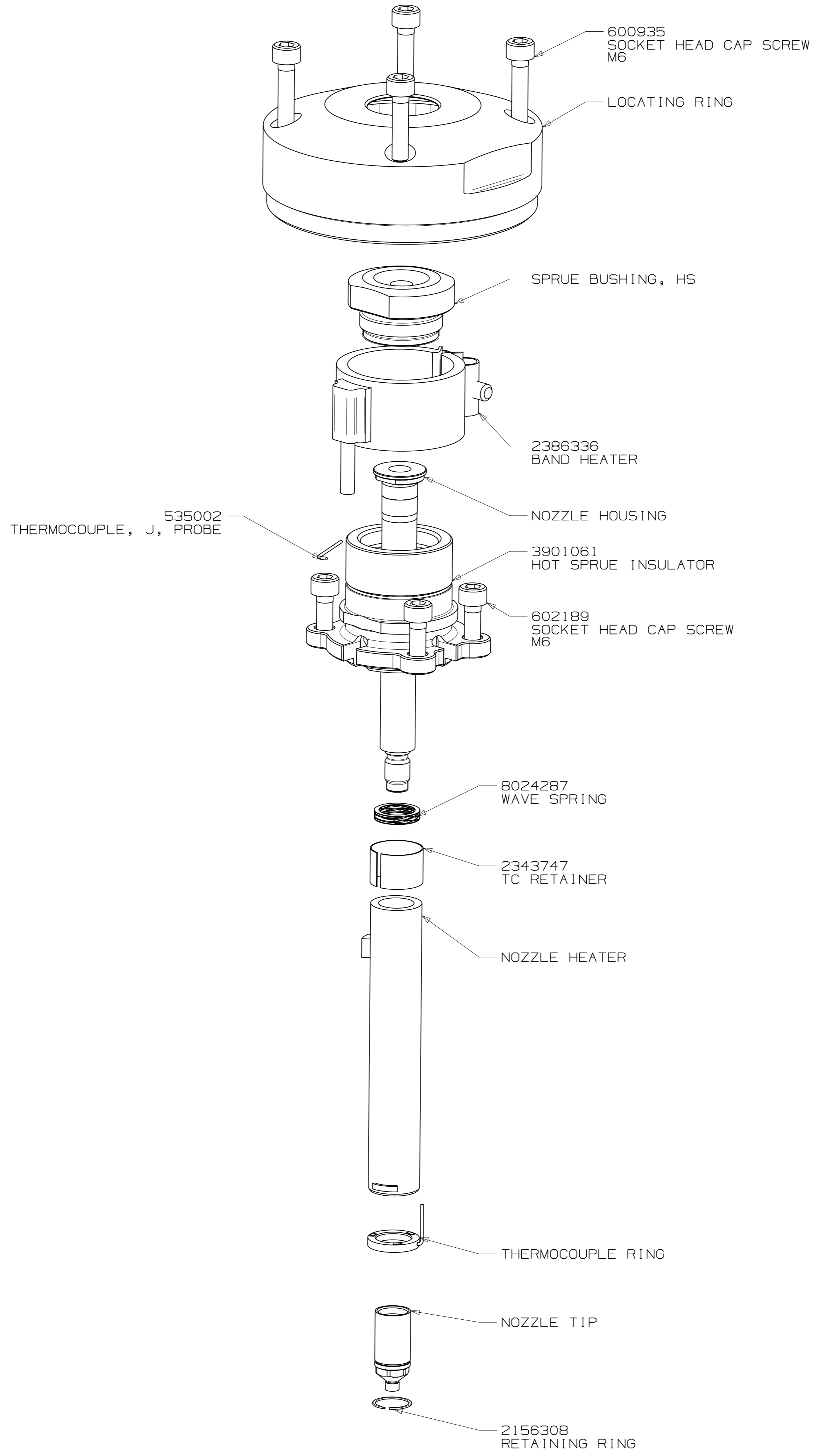
GENERAL TOLERANCES	METRIC	IMPERIAL
GENERAL TOLERANCES	ISO 278	ASME Y14.5
BROKEN EDGES/CHAMFER	1 ±0.2 X 45°	0.04 ±0.01 X 45°
FILLET/RADIUS	R0.8 ±0.2	R0.03 ±0.01
SURFACE FINISH	1/2	

FOR TORQUE SPECIFICATIONS, REFER TO HS 252	
WEIGHT	- kg

HUSKY		TITLE	SCALE	NO	SIZE	DRWNG	REV
HOT SPRUE		U500-HT-TS	AOR	1	2	8093478	0

ASSEMBLY DRAWING

DRAWING 8093478 REV 0



EXPLODED VIEW
SCALE 1:1

UNLESS OTHERWISE SPECIFIED
TORQUE TO HUSKY SPECIFICATION
HS 252

PRELOAD CLASS HGT-80		
SIZE	Nm	lb-ft
#8	5	4
#10	7	5
1/4	16	12
5/16	35	25
3/8	60	45
7/16	95	70
1/2	150	110
5/8	290	210
3/4	500	360
7/8	790	580
1	1180	865
M4	4.6	3.4
M5	9.5	7.1
M6	16	12
M8	39	29
M10	77	57
M12	135	100
M14	215	160
M16	330	245
M20	650	480
M24	1100	810

ELECTRICAL INFO (240 VAC)	
ZONE	ZONE DESCRIPTION
1	SPRUE BODY
2	NOZZLE TIP
T/C LEADS: WHITE = (+) RED = (-)	
RECOMMENDED GATE COOLING GUIDELINES ADEQUATE COOLING IS ESSENTIAL FOR THE PROPER FUNCTION OF THIS SYSTEM. REFER TO THE HOT RUNNER PRODUCT GUIDE FOR MORE DETAILED GUIDELINES. www.husky.cc	
RECOMMENDED GATE MATERIAL NOTE: THESE MATERIALS MAY NOT OFFER THE DESIRED RESISTANCE TO ABRASIVE AND/OR CORROSIVE RESINS, FILLERS AND/OR ADDITIVES AISI H13 (49-51 Rc) AISI 420 (49-51 Rc)	
RECOMMENDED GATE MANUFACTURING GUIDELINES - HARDENED GATE INSERTS (49-51) ARE RECOMMENDED WHEN USING SOFTER CAVITY STEELS. SOFTER CAVITIES MAY BE ACCEPTABLE FOR CERTAIN APPLICATIONS. CONTACT YOUR HUSKY REPRESENTATIVE WITH QUESTIONS. - EDM'ING THE GATE AREA CAUSES MICRO CRACKS WHICH LEAD TO BRITTLE GATE FAILURES. ALSO - DO NOT EDM THE MOLDING SURFACE WITHIN 2mm OF THE GATE HOLE. - MACHINE THE GATE HOLE AFTER HARDENING TO AVOID EXCESSIVE QUENCH IN THE THIN SECTION DURING HEAT TREAT & RESULTING OVERHARDENING IN THE GATE AREA. - RECESSED GATES ON THE PRODUCT REDUCE THE GATE AREA STRENGTH LEADING TO GATE FAILURES. - WELDING THE GATE AREA INCREASES STRESSES AT THE GATE, SOFTENS THE AREA AROUND THE WELD AND CAN CAUSE GATE FAILURES.	

REV	DATE	DESCRIPTION	NAME
5	2020-05-26	TABLE UPDATED PER LATEST CALCULATION	DRWN: DEEBAN N T CHKD:
4	2019-07-09	TEMPLATE VALUES UPDATED AS PER SCL 2.0	DRWN: MURALIDHARAN CHKD:
3	2019-02-05	SINGLE CAVITY NAMEPLATE REMOVED	DRWN: ARUN CHKD:
2	2018-06-20	DRAWING NAME CHANGED	DRWN: ANUSHLAL CHKD:
0	2017-09-08	ORIGINAL ISSUE - DESIGNED BY: DHANANJAYAN	DRWN: DHANANJAYAN CHKD: PICHLER KLAUS

FOR TORQUE SPECIFICATIONS, REFER TO HS 252	METRIC THIS DRAWING AND INFORMATION CONTAINED WITHIN IS CONFIDENTIAL AND/OR PROPRIETARY TO HUSKY INJECTION MOLDING SYSTEMS LTD. OR ONE OF ITS SUBSIDIARIES. IT IS NOT TO BE COPIED, REPRODUCED OR USED, IN WHOLE OR IN PART, WITHOUT THE PRIOR WRITTEN CONSENT OF HUSKY. NO INTELLECTUAL PROPERTY RIGHTS ARE GRANTED INCLUDING ANY LICENSE IMPLIED OR OTHERWISE. ALL RIGHTS RESERVED. COPYRIGHT 2017 HUSKY.	HUSKY TITLE HOT SPRUE U500-HT-TS
WEIGHT - kg	SCALE NONE	SIZE AIR
DRAWING 8093478		REV 0
SHEET 2 OF 2		